

SECTION 9, T.6N., R.2W., S.L.B. & M.

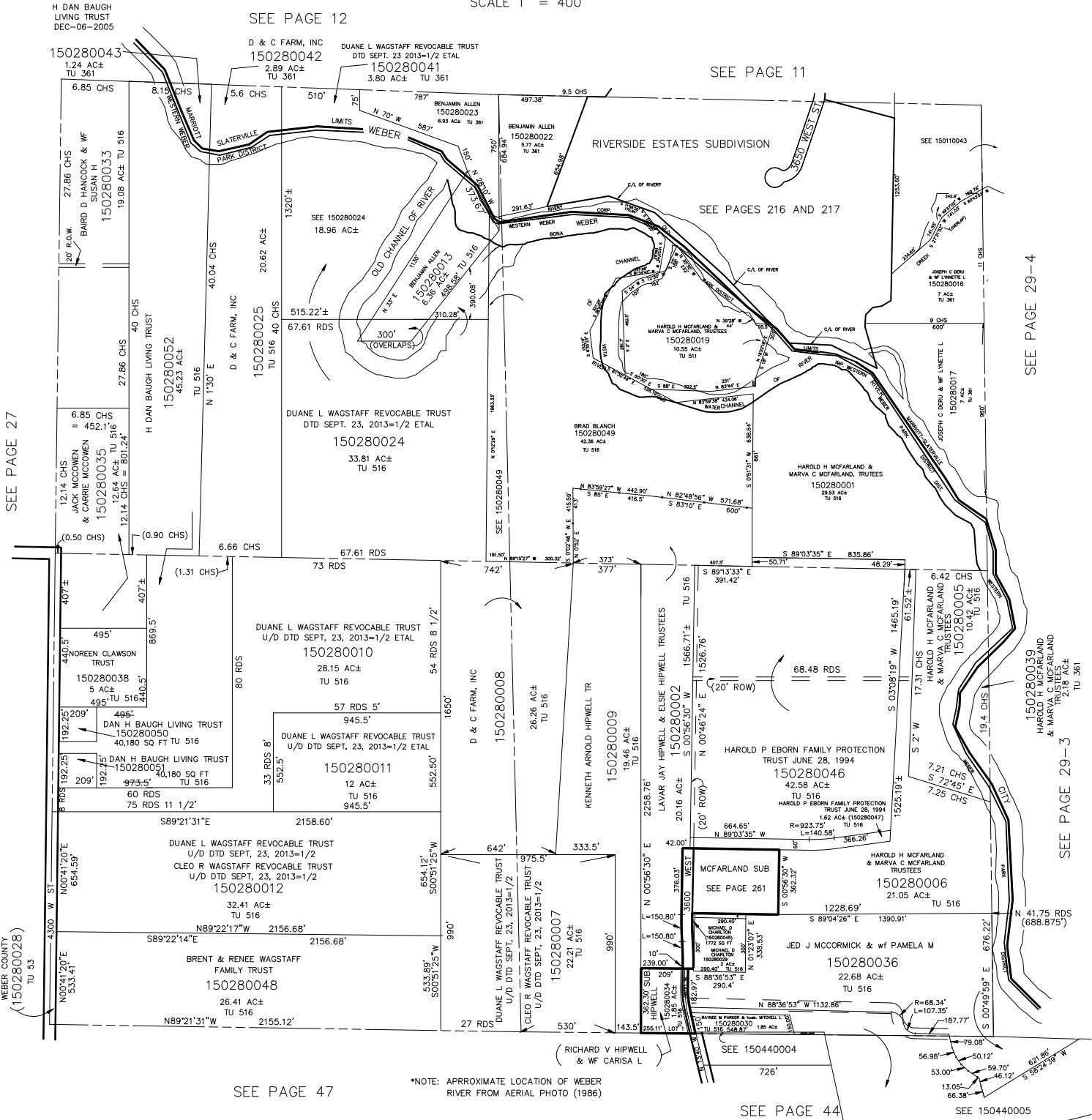
TAXING UNIT: 53,361,511,516

IN MARIOTT-SLATERVILLE CITY & WEBER COUNTY

SCALE 1" = 400'

SEE PAGE 12

SEE PAGE 11



SEE PAGE 27

SEE PAGE 29-4

SEE PAGE 29-3

SEE PAGE 47

\*NOTE: APPROXIMATE LOCATION OF WEBER RIVER FROM AERIAL PHOTO (1986)

SEE PAGE 44

SEE 150440005